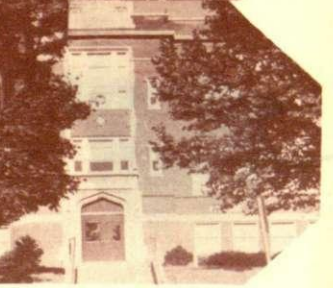
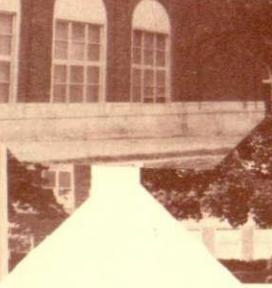
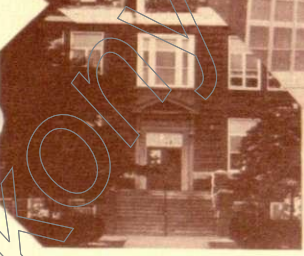
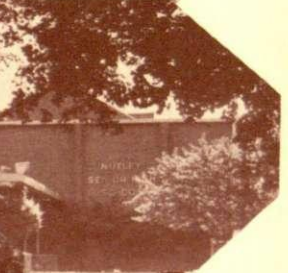
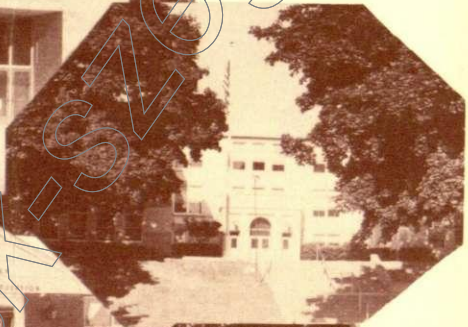


R D F



ekönyvtár.szk-szeged.hu

TESTIMONIAL DINNER

honoring

DR. ROBERT D. FLEISCHER

Sponsored by

Friends of Bob

Westmount Country Club

West Paterson, New Jersey

OCTOBER 11, 1973

MENU

Fresh Fruit Basket

Lazy Susan Condiments

Cream of Mushroom Soup

Roast Prime Ribs of Beef, Au Jus

Baked Potatoes - Sour Cream and Chives

String Beans, Amandine

Bombe Flambe

Coffee - Tea

Dinner Rolls and Butter

Mints and Nuts

INVOCATION Rev. John Wightman

INTRODUCTION Mr. E. Donald Harrison

MASTER OF CEREMONIES Mr. David H. Broffman

SPEAKERS Miss Evelyn Glasgow

Dr. Frank Stover

Mr. Simeon Moss

Mrs. Thomas Jaworek

Mr. Edward Lenihan

PRESENTATION

BENEDICTION Rt. Rev. Monsignor John J. Feeley

COMMITTEE

Co-Chairmen

E. Donald Harrison

Glyn Fowler

David H. Broffman

Miss Evelyn Glasgow

William Hoffmeister

Miss Elsie Ciccone

Mrs. Alfred R. Peters

Mrs. Bernard Rabinowitz

Mrs. Thomas J. O'Rourke

Mrs. John F. Arnold

Mrs. Stanley G. Bedford

Rev. John Wightman

Theodore Berger



THIS IS OUR BOB

PERSONAL

Born in Pittsburgh, Pa.
Educated in the public schools of Pittsburgh, Pa. and Birmingham, Ala.
Attended Grove City College
Received his Bachelors, Masters and Doctorate from the University of Pittsburgh
Married to the former Gertrude E. Enright. They have three sons, John, Frank, and Jimmy.

TEACHING EXPERIENCE

Teacher in Rockwood, Pa.
High School Principal, Carnegie, Pa.
High School Principal, Greensburg, Pa.
High School Principal, Nutley, N.J.
Superintendent of Schools, Nutley, N.J.
Teacher of Graduate Courses, Rutgers University

CONTRIBUTIONS TO ATHLETICS

Participated in basketball, football, baseball and track at the high school level
Participated in basketball and baseball at the semi-professional and professional levels
Coached high school sports activities
Developed high school athletic programs in Pennsylvania and New Jersey

PROFESSIONAL INFORMATION

National Education Association, life member
New Jersey Education Association
Phi Delta Kappa
Essex County Superintendents' Roundtable
American Association of School Administrators
President, New Jersey Association of School Administrators
New Jersey Council for Economic Education, member of Executive Committee (chairman, 1966-72)
New Jersey School Development Council, member of Executive Committee (chairman, 1969-70)
American Academy of Political and Social Science
Member, Governor Cahill's Task Force on Economic Education
Listed in *Who's Who in the East*

